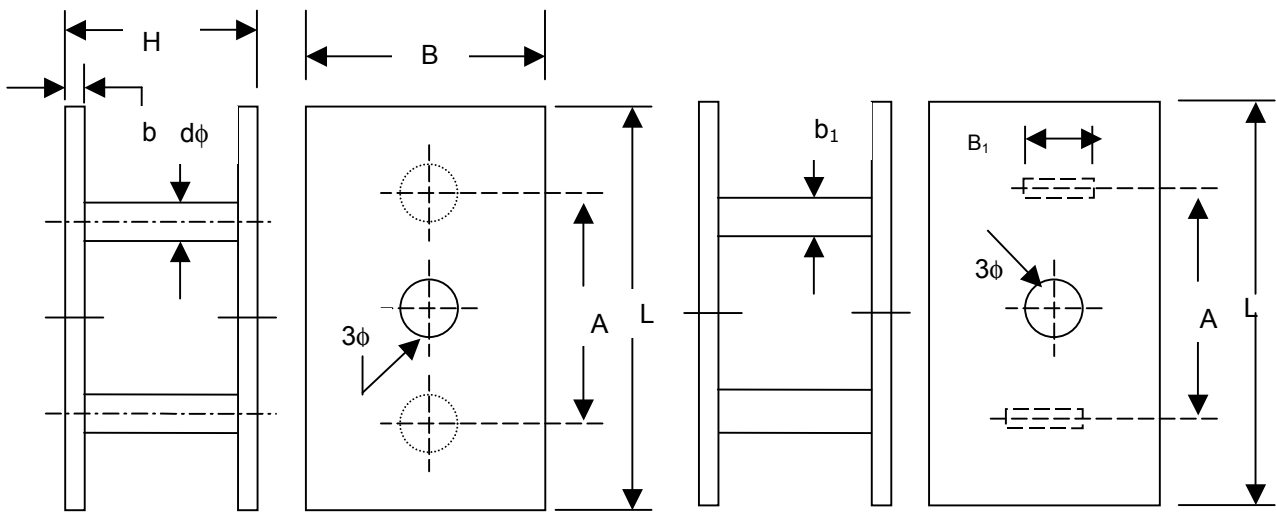


**TABLE 5 DIMENSIONS OF TWO COLUMN CHAPLETS,  
TYPE 3, VARIANTS 1 AND 2**  
(Clauses 4.1 and 4.1.1)

All dimensions in millimetres.



**VARIANT 1**

With round columns and rectangular heads

**VARIANT 2**

With rectangular columns and rectangular heads

Nominal	H	L	B	A	b	d		B <sub>1</sub> x b <sub>1</sub>
	Tolerance					For iron castings	For steel castings	For iron castings
12	+0.50 -0.14	44	22	22	0.75	4	-	9x1.5
14								
15								
16								
18								
20	+0.60 -0.14	64	32	32	1.0	6	-	12x2.5
22								
24								
25								
26								
28	+0.80 -0.12	80	40	40	1.5	8	-	13x4
32								
35								
38								
40								
45	+1.0 -0.06	92	46	46	2.0	10	12	-
50								
55								
60								
65								
70	+1.0 -0.24	100	50	50	2.5	12	14	-
75								
80								
85								
90								
95								
100								