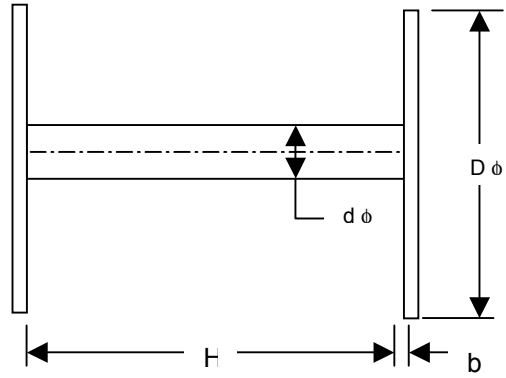


**Single Studs**



Nominal	H		B	b	d		B <sub>1</sub> x b <sub>1</sub>
	Tolerance				For iron castings	For steel castings	For iron castings
5	+0.20 -0.10		16	0.5	3		7x1.0
6							
7							
8	+0.30 -0.10		22	0.75	4		9x1.5
9							
10							
12							
14							
15							
16	+0.50 -0.14		32	1.0	6		12x2.5
18							
20							
22							
24							
25							
26	+0.60 -0.14		40	1.5	8		13x4
28							
30							
32							
35							
38							
40	+1.0 -0.06		46	2.0	10	12	-
45							
50							
55							
60							
65							
70	+1.0 -0.24		50	2.5	12	14	-
75							
80							
85							
90							
95							
100							